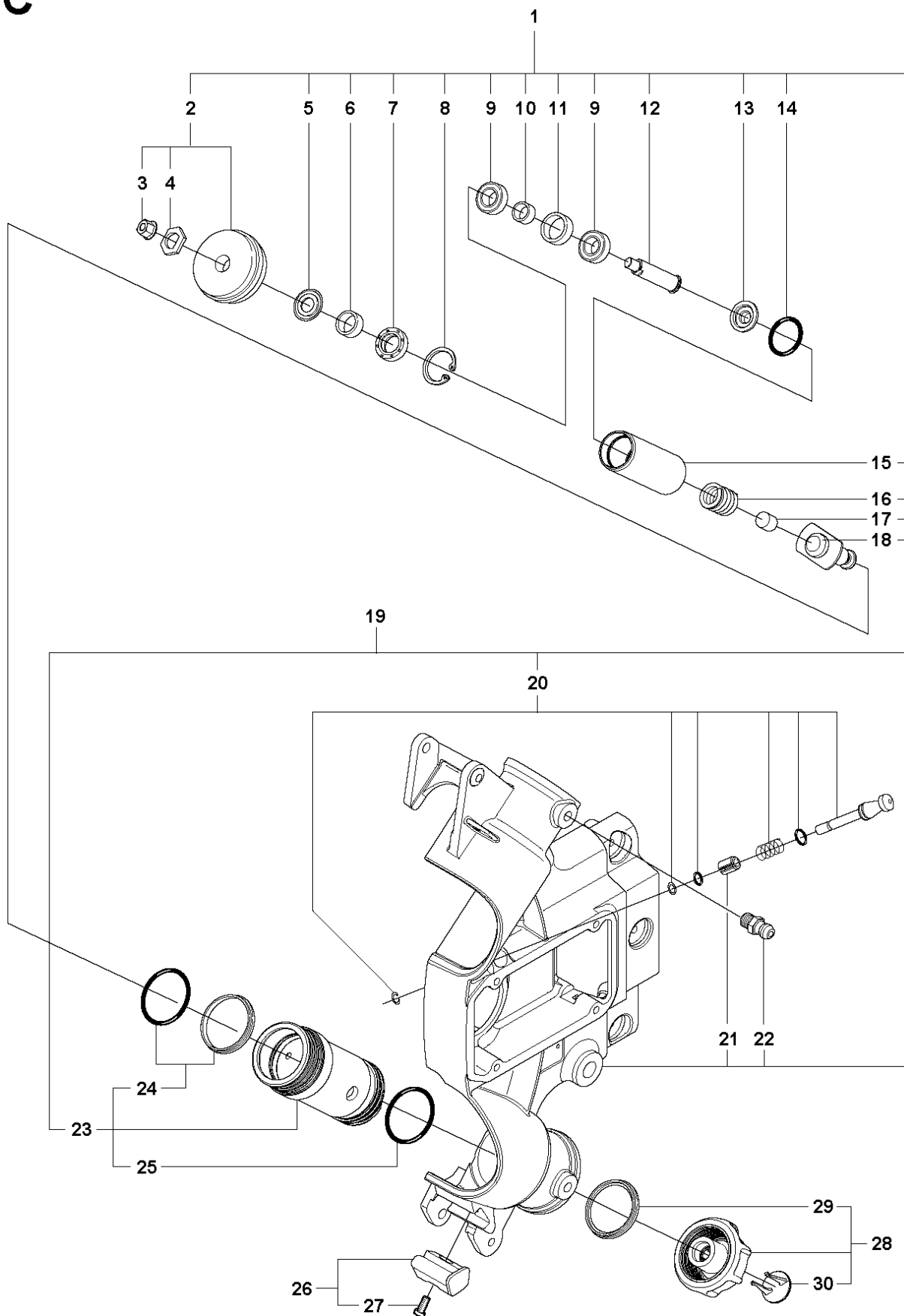




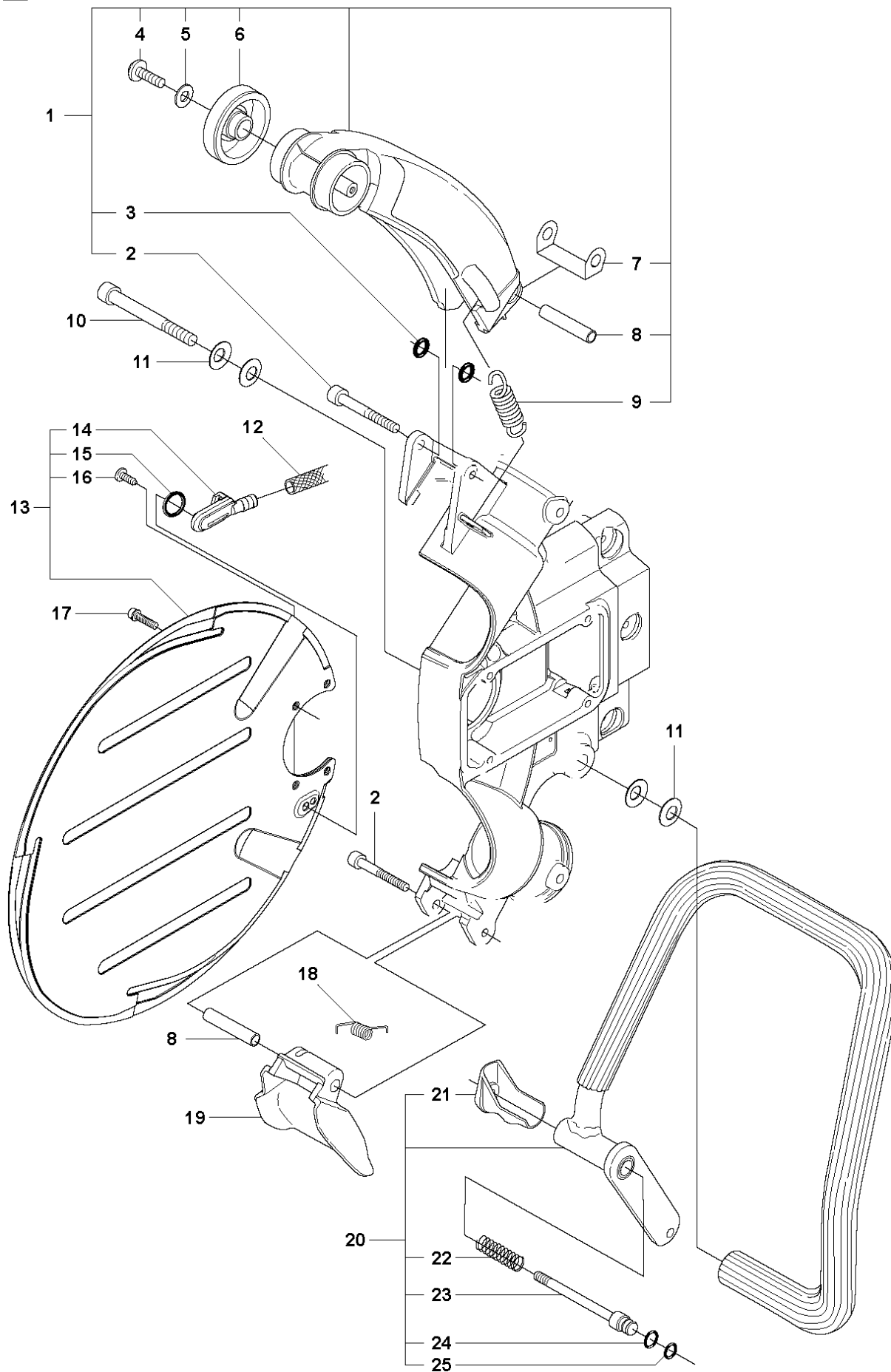
SPARE PARTS LIST

POWER CUTTERS

K3600 MkII, 2009-01

C K3600MkII

| Ref | Part no. | Description | Remark | Qty | Kit |
|-----|--------------|--------------------|--------------------------------|-----|-----|
| 1 | 506 49 34-01 | BEARING CAGE | Incl. 2, 5 - 18 | 2 | |
| 1 | 506 49 34-02 | BEARING CAGE | Incl. 2, 5 - 18. Double groove | 2 | |
| 2 | 506 35 20-05 | GUIDE ROLLER | Incl. 3, 4 | 1 | |
| 2 | 506 35 20-06 | GUIDE ROLLER | Incl. 3, 4. Double groove | 1 | |
| 3 | 503 22 04-01 | NUT | | 1 | |
| 4 | 506 30 34-01 | DRIVER | | 1 | |
| 5 | 506 31 69-01 | DUST COVER | | 1 | |
| 6 | 506 37 93-02 | SPACING SLEEVE | | 1 | |
| 7 | 503 26 20-01 | SEALING RING | | 1 | |
| 8 | 735 31 28-10 | CIRCLIP | | 1 | |
| 9 | 503 25 24-01 | BALL BEARING | | 2 | |
| 10 | 506 30 33-01 | SPACING SLEEVE | | 1 | |
| 11 | 506 31 68-01 | SPACING SLEEVE | | 1 | |
| 12 | 506 49 32-01 | SHAFT | | 1 | |
| 13 | 506 38 11-01 | CAP | | 1 | |
| 14 | 740 48 20-12 | O-RING | | 1 | |
| 15 | 506 38 09-01 | BEARING CAGE | | 1 | |
| 16 | 506 34 76-01 | COMPRESSION SPRING | | 1 | |
| 17 | 506 30 35-01 | BUMPER | | 1 | |
| 18 | 506 38 97-01 | PIN | | 1 | |
| 19 | 506 36 83-06 | CHASSIS | Incl. 20 - 23 | 1 | |
| 20 | 506 30 09-01 | LOCKING BUTTON | | 1 | |
| 21 | 721 44 06-00 | SPRING PIN | | 1 | |
| 22 | 738 88 10-01 | LUBRICATION NIPPLE | | 2 | |
| 23 | 544 07 76-01 | SLEEVE | Incl. 24 - 25 | 2 | |
| 24 | 506 34 39-01 | WIPER | | 2 | |
| 25 | 740 48 25-02 | O-RING | | 2 | |
| 26 | 506 35 19-03 | WEAR PROTECTION | Incl. 27 | 1 | |
| 27 | 505 57 41-16 | SCREW ITXSCM | | 1 | |
| 28 | 506 38 22-02 | KNOB | Incl. 29 - 30 | 1 | |
| 29 | 506 33 65-01 | SEALING RING | | 1 | |
| 30 | 506 38 21-02 | CAP | | 1 | |

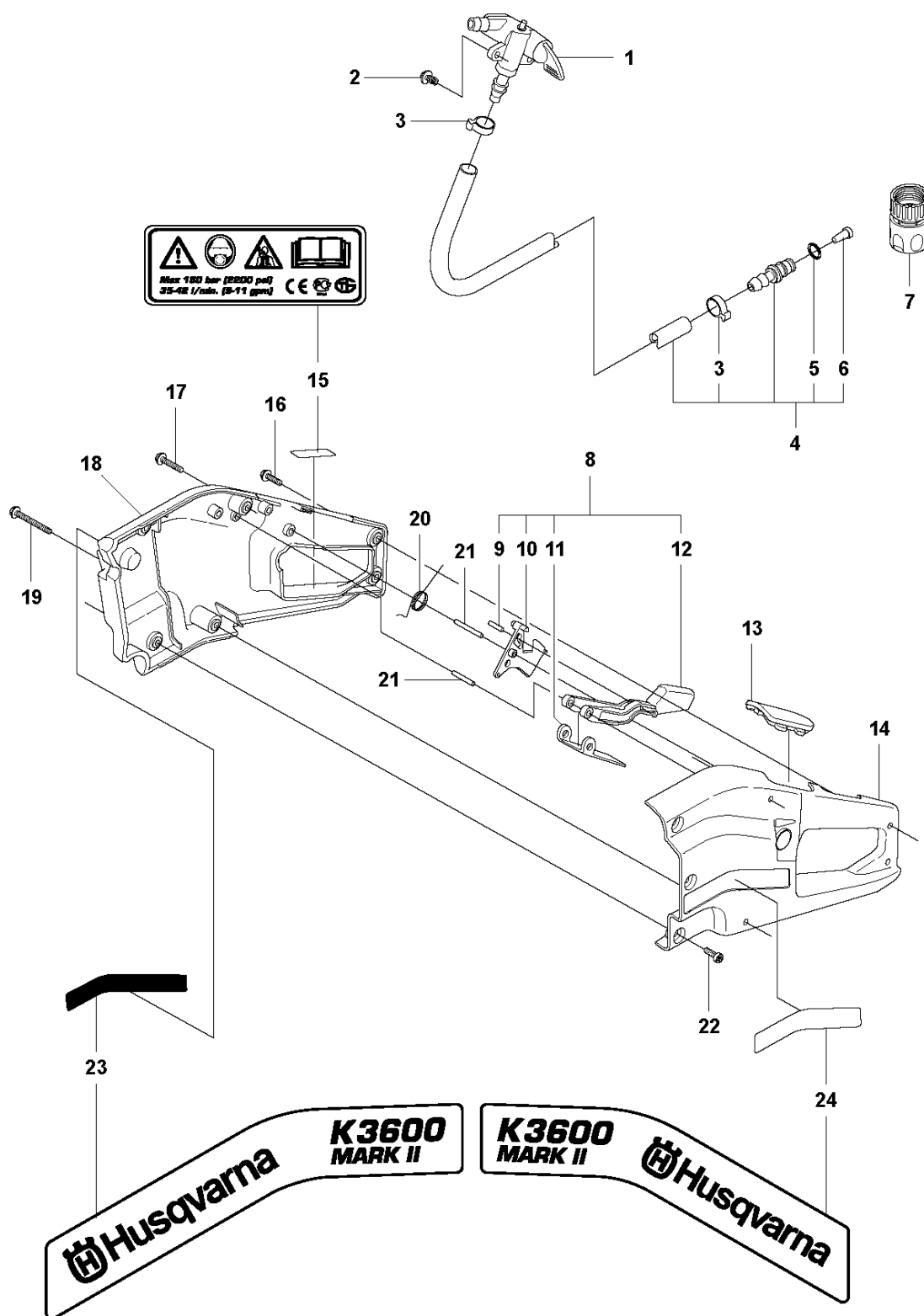
E K3600MkII

GUARDS

K3600 MkII, 2009-01

| Ref | Part no. | Description | Remark | Qty | Kit |
|-----|--------------|----------------|---------------|-----|-----|
| 1 | 506 24 69-06 | BLADE GUARD | Incl. 2 - 9 | 1 | |
| 2 | 544 21 84-47 | SCREW ITXSCM | | 2 | |
| 3 | 503 26 30-25 | O-RING | | 2 | |
| 4 | 503 21 46-01 | SCREW | | 2 | |
| 5 | 734 48 80-01 | WASHER | | 2 | |
| 6 | 506 26 22-02 | WHEEL | | 2 | |
| 7 | 506 31 28-01 | COVER PLATE | | 1 | |
| 8 | 506 31 45-01 | SPACER TUBE | | 1 | |
| 9 | 504 11 67-01 | SPRING | | 1 | |
| 10 | 725 54 69-05 | SCREW IHSCM | | 1 | |
| 11 | 506 10 55-01 | CUP SPRING | | 4 | |
| 12 | 501 98 65-01 | HOSE | | 1 | |
| 13 | 506 38 33-02 | WATER BLADE | Incl. 14 - 16 | 1 | |
| 14 | 506 38 29-01 | NIPPLE | | 1 | |
| 15 | 505 10 35-01 | O-RING | | 1 | |
| 16 | 729 52 89-71 | SCREW CRPANT | | 1 | |
| 17 | 505 57 41-16 | SCREW ITXSCM | | 4 | |
| 18 | 506 25 75-01 | TORSION SPRING | | 1 | |
| 19 | 506 25 68-02 | SPRAY GUARD | | 1 | |
| 20 | 506 35 72-04 | HANDLE ASSY | Incl. 21 - 25 | 1 | |
| 21 | 506 35 73-02 | GRIP | | 1 | |
| 22 | 506 24 95-01 | SPRING | | 1 | |
| 23 | 544 13 74-01 | PIN | | 1 | |
| 24 | 503 26 30-22 | O-RING | | 1 | |
| 25 | 740 43 03-00 | O-RING | | 1 | |

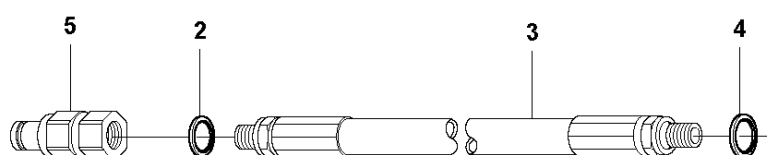
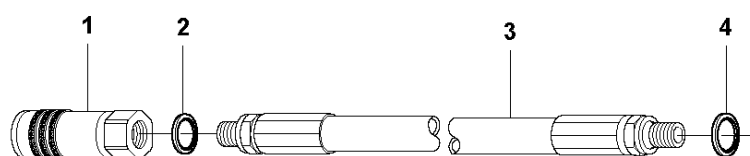
A K3600MkII



HANDLE

K3600 MkII, 2009-01

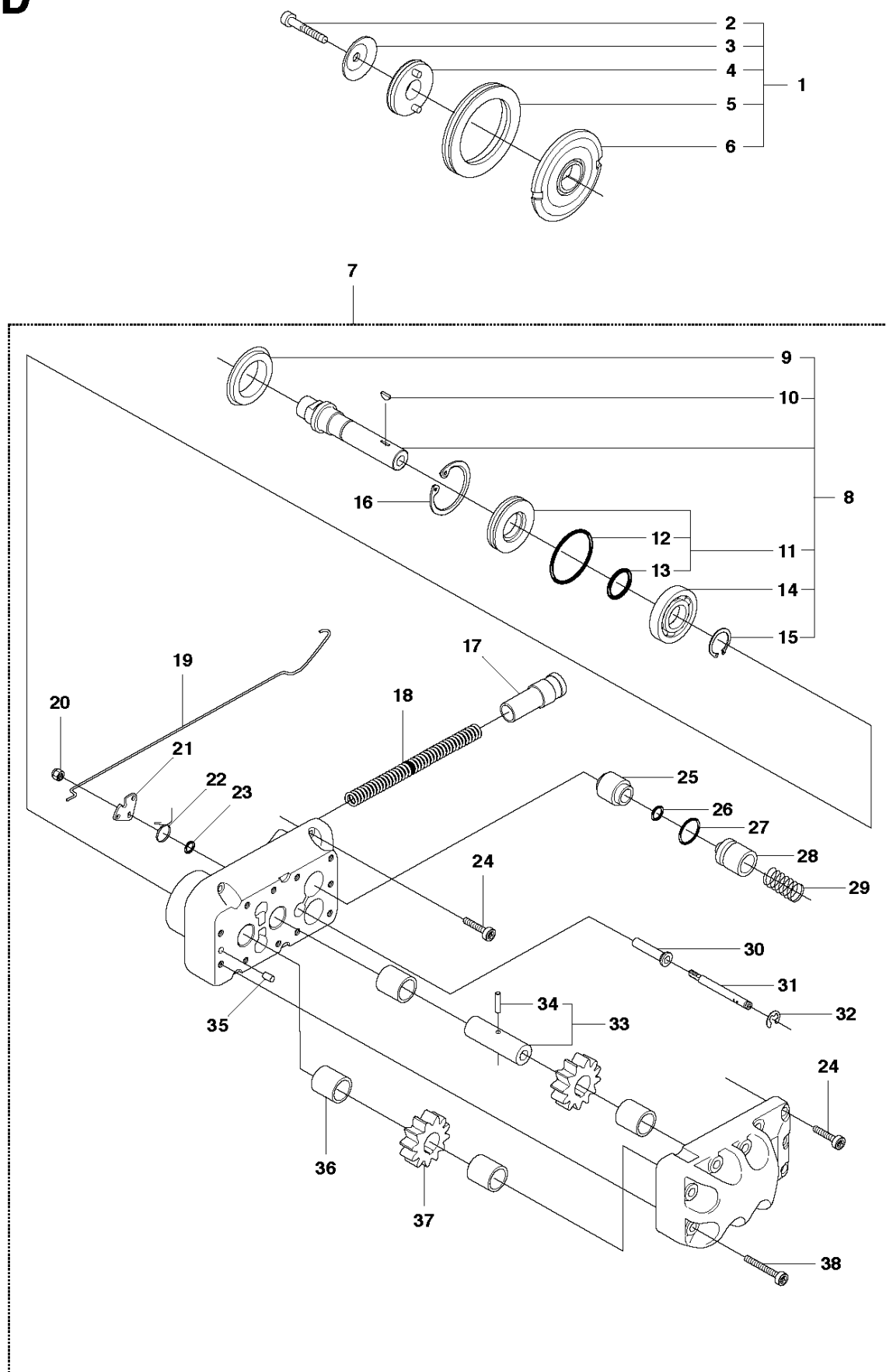
| Ref | Part no. | Description | Remark | Qty | Kit |
|-----|--------------|-------------------|--------------|-----|-----|
| 1 | 506 34 94-02 | TAP | | 1 | |
| 2 | 503 21 46-01 | SCREW | | 2 | |
| 3 | 506 49 87-02 | HOSE CLAMP | | 2 | |
| 4 | 506 29 31-04 | WATER HOSE KIT | Incl. 5 - 7 | 1 | |
| 5 | 505 10 35-01 | O-RING | | 1 | |
| 6 | 506 29 88-01 | FILTER | | 1 | |
| 7 | 503 26 60-03 | COUPLER | USA | 1 | |
| 7 | 503 26 60-04 | COUPLER | | 1 | |
| 8 | 506 37 76-02 | THROTTLE TRIGGER | Incl. 9 - 12 | 1 | |
| 9 | 720 12 71-52 | PARALLEL PIN | | 1 | |
| 10 | 506 20 34-03 | THROTTLE TRIGGER | | 1 | |
| 11 | 506 31 63-01 | PLATE | | 1 | |
| 12 | 506 27 21-02 | THROTTLE LOCKOUT | | 1 | |
| 13 | 506 35 54-03 | WINDOW | | 1 | |
| 14 | 506 24 52-03 | HANDLE HALF LEFT | | 1 | |
| 15 | 544 87 32-01 | DECAL | | 1 | |
| 16 | 503 21 53-16 | SCREW ITXSCM | | 4 | |
| 17 | 503 21 53-26 | SCREW ITXSCM | | 1 | |
| 18 | 506 24 53-03 | HANDLE HALF RIGHT | | 1 | |
| 19 | 503 21 53-41 | SCREW ITXSCM | | 1 | |
| 20 | 506 26 26-01 | TORSION SPRING | | 1 | |
| 21 | 720 13 16-06 | PARALLEL PIN | | 1 | |
| 22 | 503 21 53-12 | SCREW ITXSCM | | 3 | |
| 23 | 544 87 29-01 | LABEL | | 1 | |
| 24 | 544 87 30-01 | LABEL | | 1 | |
| 25 | 720 13 13-06 | PARALLEL PIN | | 1 | |

F K3600MkII

HOSE

K3600 MkII, 2009-01

| Ref | Part no. | Description | Remark | Qty | Kit |
|-----|--------------|----------------|--------|-----|-----|
| 1 | 506 10 96-21 | QUICK COUPLING | Female | 1 | |
| 2 | 740 38 34-01 | SEALING WASHER | | 2 | |
| 3 | 506 10 95-02 | HYDRAULIC HOSE | | 2 | |
| 4 | 740 38 27-01 | SEALING WASHER | | 2 | |
| 5 | 506 10 98-21 | QUICK COUPLING | Male | 1 | |

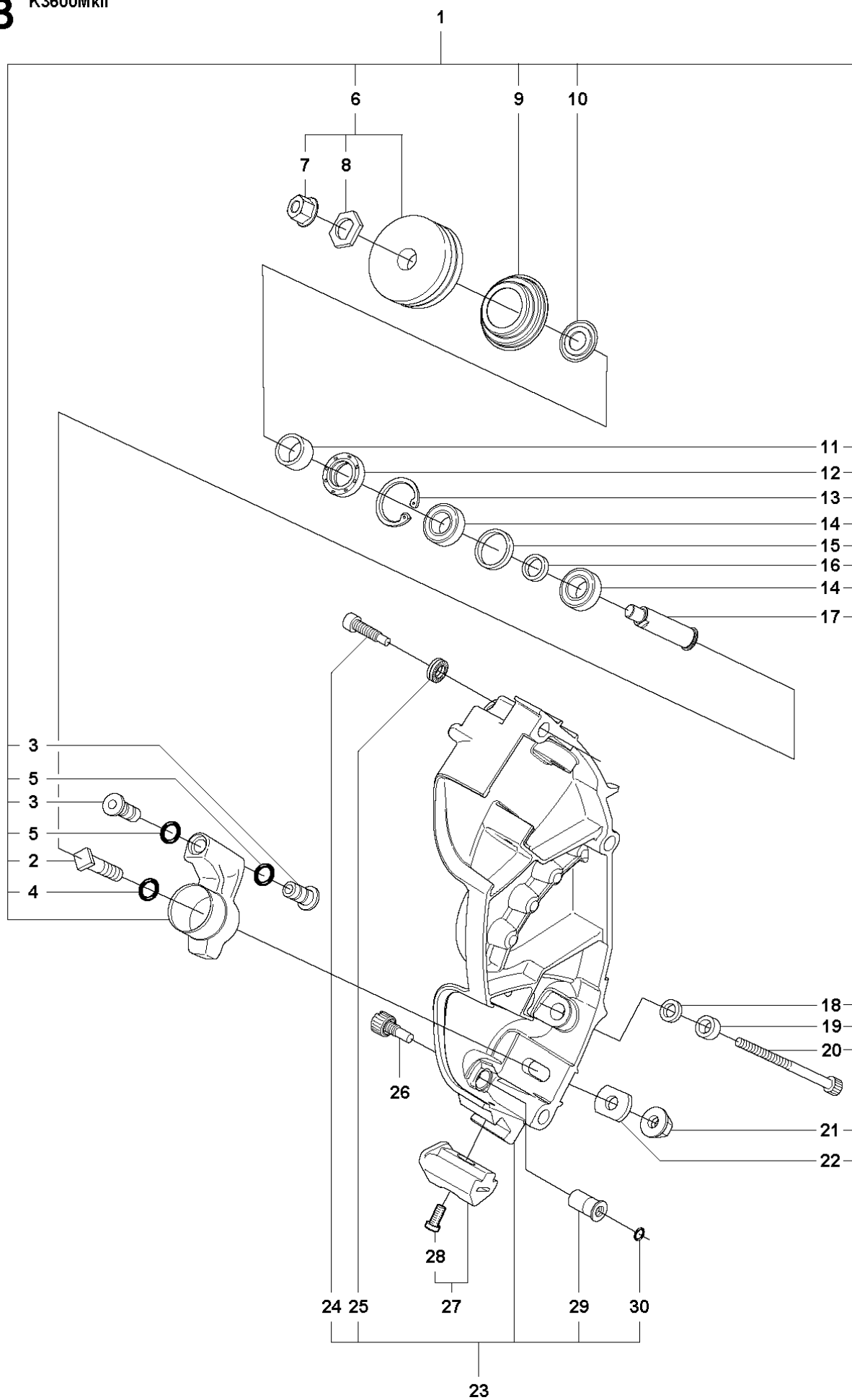
D K3600MkII

HYDRAULIC PUMP - MOTOR

K3600 MkII, 2009-01

| Ref | Part no. | Description | Remark | Qty | Kit |
|-----|--------------|---------------------|--------------|-----|-------|
| 1 | 506 32 08-04 | GEAR WHEEL ASSY | 06-feb | 1 | |
| 2 | 544 21 84-37 | SCREW ITXSCM | | 1 | 1 |
| 3 | 506 13 95-12 | WASHER | | 1 | 1 |
| 4 | 506 31 22-02 | DRIVER | | 1 | 1 |
| 5 | 506 17 83-04 | GEAR WHEEL | | 1 | 1 |
| 6 | 506 25 65-02 | FLANGE WASHER | | 1 | 1 |
| 7 | 544 88 66-02 | HYDRAULIC MOTOR | | 1 | |
| 8 | 506 34 67-14 | KIT | 9-11, 14, 15 | 1 | 7 |
| 9 | 506 27 34-01 | SEALING COLLAR | | 1 | 7, 8 |
| 10 | 735 88 06-00 | WOODRUFF KEY | | 1 | 7, 8 |
| 11 | 506 30 11-14 | SEALING | 13-dec | 1 | 7, 8 |
| 12 | 506 11 03-01 | O-RING | | 1 | 7, 11 |
| 13 | 503 26 30-28 | O-RING | | 1 | 7, 11 |
| 14 | 738 22 01-25 | BALL BEARING | | 1 | 7, 8 |
| 15 | 735 31 14-00 | CIRCLIP | | 1 | 7, 8 |
| 16 | 735 31 31-10 | CIRCLIP | | 1 | 7 |
| 17 | 506 21 82-01 | PLUNGE | | 1 | 7 |
| 18 | 506 21 83-01 | SPRING | | 1 | 7 |
| 19 | 506 35 95-01 | THROTTLE ROD | | 1 | 7 |
| 20 | 732 25 12-01 | HEXAGON LOCKING NUT | | 1 | 7 |
| 21 | 506 20 31-01 | LEVER | | 1 | 7 |
| 22 | 506 20 38-01 | SPRING | | 1 | 7 |
| 23 | 740 43 02-00 | O-RING | | 1 | 7 |
| 24 | 503 21 53-20 | SCREW ITXSCM | | 9 | 7 |
| 25 | 506 21 85-01 | VALVE SEAT | | 1 | 7 |
| 26 | 740 42 03-00 | O-RING | | 1 | 7 |
| 27 | 740 43 11-00 | O-RING | | 1 | 7 |
| 28 | 506 21 80-01 | VALVE CONE | | 1 | 7 |
| 29 | 506 21 81-01 | SPRING | | 1 | 7 |
| 30 | 506 21 60-01 | VALVE SLEEVE | | 1 | 7 |
| 31 | 506 21 59-01 | VALVE SPINDLE | | 1 | 7 |
| 32 | 735 31 08-20 | E-CLIP | | 1 | 7 |
| 33 | 506 32 00-01 | SHAFT | | 1 | 7 |
| 34 | 503 24 07-01 | PARALLEL PIN | | 6 | 7 |
| 35 | 501 27 08-01 | GUIDE BUSHING | 36,37 | 1 | 7 |
| 36 | 506 11 05-01 | BEARING | | 4 | 7 |
| 37 | 506 22 96-09 | GEAR WHEEL | | 1 | 7 |
| 38 | 503 21 53-30 | SCREW ITXSCM | | 1 | 7 |

B K3600MkII

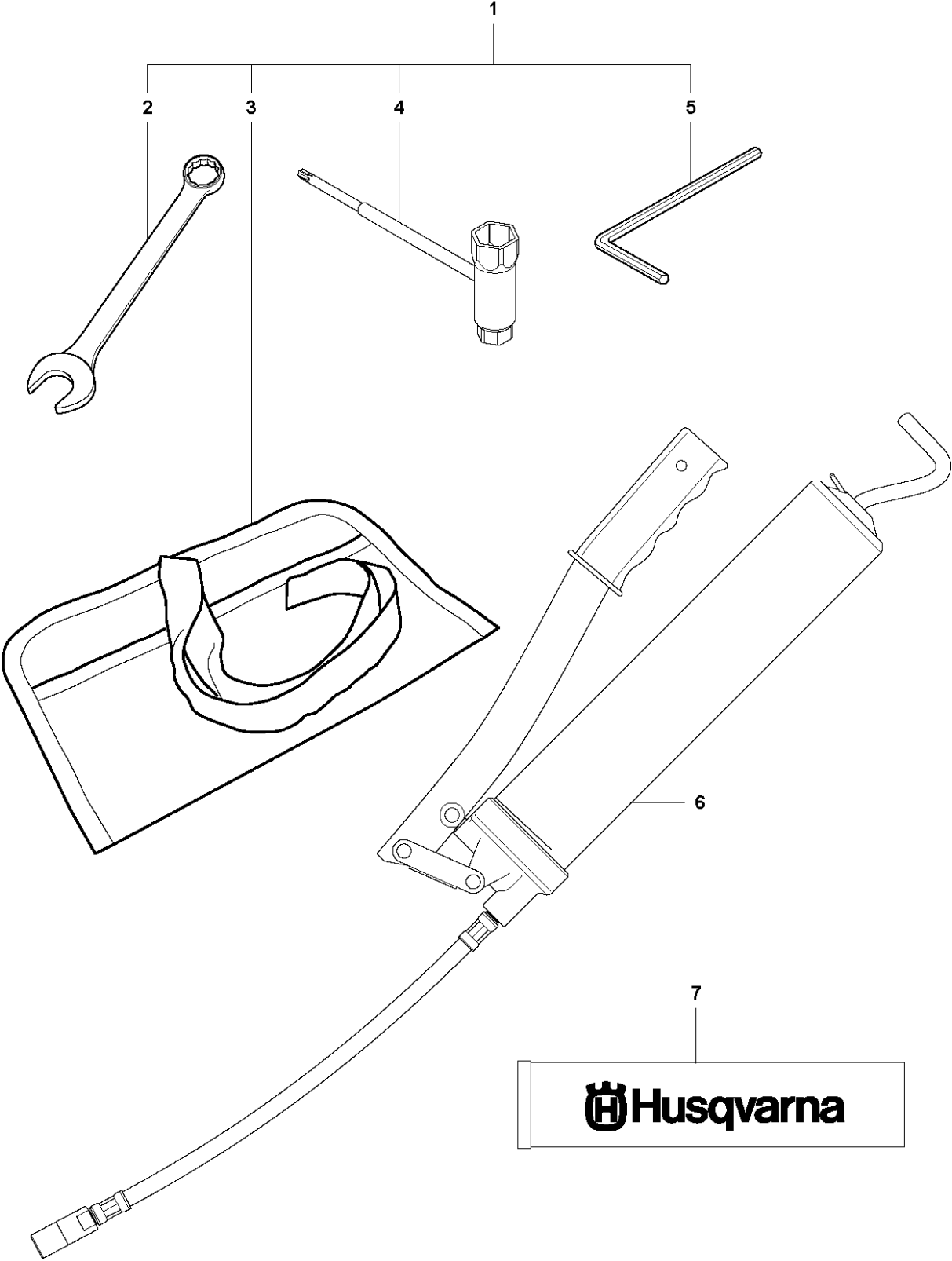


LEVER

K3600 MkII, 2009-01

| Ref | Part no. | Description | Remark | Qty | Kit |
|-----|--------------|--------------------|------------------------|-----|-----|
| 1 | 506 35 18-07 | LEVER ASSY | Incl. 2 - 6, 9 - 22 | 2 | |
| 2 | 506 34 64-01 | SCREW | | 1 | |
| 3 | 506 33 49-03 | SPACER TUBE | | 2 | |
| 4 | 503 26 30-08 | O-RING | | 1 | |
| 5 | 503 26 30-26 | O-RING | | 2 | |
| 6 | 506 35 21-03 | SUPPORT ROLLER | Incl. 7, 8 | 1 | |
| 7 | 503 22 04-01 | NUT | | 1 | |
| 8 | 506 30 34-01 | DRIVER | | 1 | |
| 9 | 506 39 95-01 | SEALING | | 1 | |
| 10 | 506 32 17-01 | WASHER | | 1 | |
| 11 | 506 37 93-02 | SPACING SLEEVE | | 1 | |
| 12 | 503 26 20-01 | SEALING RING | | 1 | |
| 13 | 735 31 28-10 | CIRCLIP | | 1 | |
| 14 | 503 25 24-01 | BALL BEARING | | 2 | |
| 15 | 506 31 68-02 | SPACING SLEEVE | | 1 | |
| 16 | 506 30 33-02 | SPACING SLEEVE | | 1 | |
| 17 | 506 49 32-02 | SHAFT | | 1 | |
| 18 | 506 37 63-01 | SPACER | | 1 | |
| 19 | 506 37 64-01 | RUBBER BUSHING | | 1 | |
| 20 | 544 21 84-55 | SCREW ITXSCM | | 1 | |
| 21 | 503 22 00-01 | HEXAGON NUT FLANGE | | 1 | |
| 22 | 506 34 63-01 | WASHER | | 1 | |
| 23 | 521 91 50-02 | COVER | Incl. 24 - 25, 29 - 30 | 1 | |
| 24 | 503 20 54-35 | SCREW IHSCMO | | 3 | |
| 25 | 503 23 04-03 | WASHER | | 3 | |
| 26 | 505 57 49-01 | ADJUSTING WHEEL | | 2 | |
| 27 | 506 35 19-03 | WEAR PROTECTION | Incl. 28 | 1 | |
| 28 | 505 57 41-16 | SCREW ITXSCM | | 1 | |
| 29 | 506 33 08-01 | THREAD BUSHING | | 2 | |
| 30 | 740 42 04-00 | O-RING | | 2 | |

G K3600MkII



TOOLS

K3600 MkII, 2009-01

| Ref | Part no. | Description | Remark | Qty | Kit |
|-----|--------------|------------------|-------------|-----|-----|
| 1 | 506 36 38-04 | TOOL | Incl. 2 - 5 | 1 | |
| 2 | 506 35 52-01 | SPANNER | 19mm | 1 | |
| 3 | 501 19 22-01 | TOOL CASING | | 1 | |
| 4 | 506 38 26-01 | COMBINATION TOOL | 13-19mm | 1 | |
| 5 | 506 36 36-01 | ALLEN KEY | 6mm | 1 | |
| 6 | 506 38 49-02 | LUBRICATION GUN | | 1 | |
| 7 | 544 08 04-02 | GREASE | | 1 | |